



July 26, 2021

Via email and U.S. mail
Alameda County
City of Lathrop
City of Tracy
San Joaquin County

RE: Notice of Intent to Adopt a Groundwater Sustainability Plan

The San Joaquin County (SJC) Groundwater Sustainability Agency (GSA) of the Tracy Subbasin, pursuant to California Water Code Section 10728.4, hereby gives notice to the legislative body of any city or county within the geographic area covered by the pending Tracy Subbasin Groundwater Sustainability Plan (GSP) that it intends to adopt a GSP for the Tracy Subbasin (Basin No. 5-022.15). A map of the GSP area is included herein. Consideration to adopt this joint document shall occur as part of the public hearings to be held individually by the six GSAs in the Tracy Subbasin.

Cities or counties that receive this notice may request to consult on the Tracy Subbasin GSP. These requests must be received within 30 calendar days upon receipt of this notice. Written requests to consult with one or more of the GSAs intended to adopt the Tracy Subbasin GSP shall be delivered to the GSP Coordinator identified below:

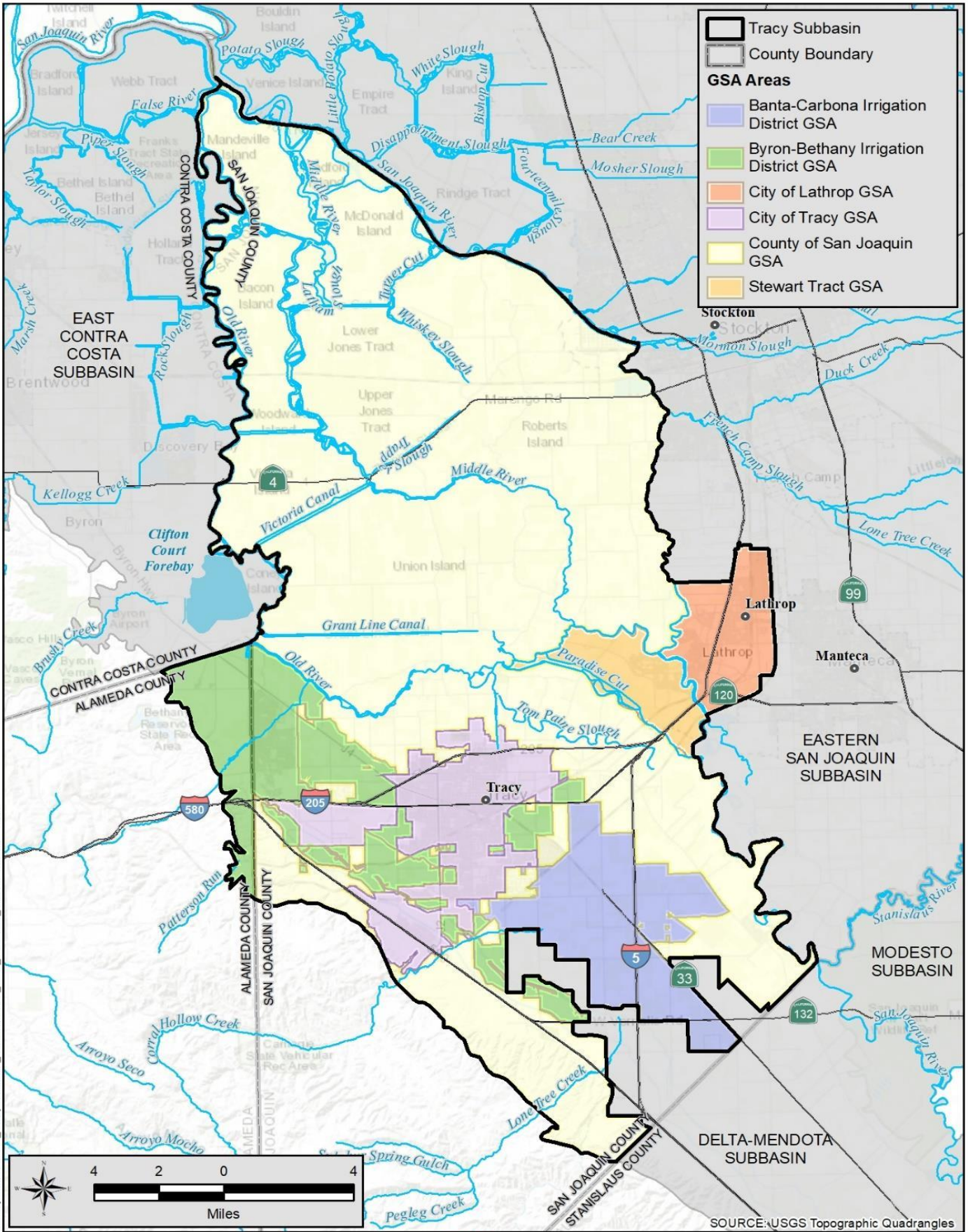
Matt Zidar, GSP Coordinator
mzidar@sjgov.org or by phone at (209) 953 -7460

Interested parties may provide comments on the Public Draft GSP during the scheduled public comment period, August 9 through September 9, 2021. Information regarding the Draft GSP has been posted on the Tracy Subbasin website at tracysubbasin.org. The Draft GSP can be viewed on the website homepage. To review the list of GSAs and/or their respective public hearing dates, please refer to the Tracy Subbasin website, www.tracysubbasin.org, for more information.

Should you have any questions about this notice, please contact the above-referenced GSP Coordinator.

Sincerely,

MATT ZIDAR
GSP Coordinator



- Tracy Subbasin
- County Boundary
- GSA Areas**
- Banta-Carbona Irrigation District GSA
- Byron-Bethany Irrigation District GSA
- City of Lathrop GSA
- City of Tracy GSA
- County of San Joaquin GSA
- Stewart Tract GSA



SOURCE: USGS Topographic Quadrangles

Tracy Subbasin
San Joaquin and Alameda Counties



GSP Plan Area and GSAs

Tracy Subbasin

APRIL 2021

FIGURE 2-1

13-Apr-2021 Z:\Projects\1905394_TracySubbasin_GSP\GSP002_GSP_PlanArea_20210413.mxd RS